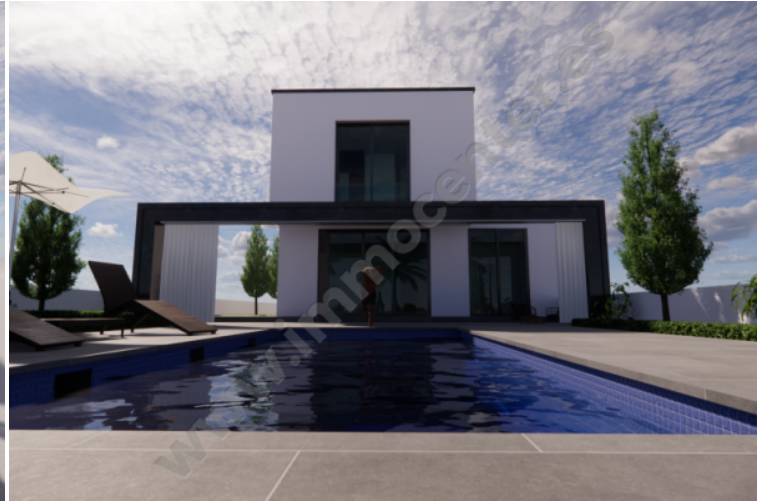
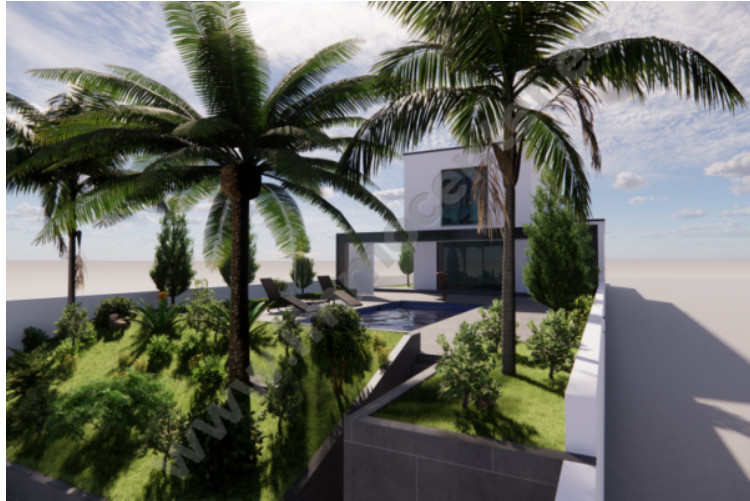


**EV398**
**Empuriabrava**
**1085000 EUR**


							
221 m <sup>2</sup>	500 m <sup>2</sup>	4	3	✓	✓	8,50 x 3,60	12.50 m

New contemporary project with a large canal with luxury services with a surface area of 221 m<sup>2</sup> located on a plot of 500m<sup>2</sup>.

The house will be distributed as follows on one level will be a beautiful spacious and bright living room with its fully equipped kitchen, a double bedroom, a bathroom, a laundry room and, a garage.

Upstairs there will be 3 bedrooms (one of which is en-suite), and a bathroom.

On the canal side, there will be a garden with trees as well as the swimming pool, and a boat mooring of 12.50 meters.

Extras: Underfloor heating, central air conditioning!

### Key characteristics:

Exclusive property, Investment property

Private garden

American fully equipped kitchen

New construction

**Environment:**

Beautifully located, Quiet neighbourhood, Residential zone, Close to the sea, Close to the beach, Close to nature park, Close to park, Close to shopping area, Close to town centre

**View:**

Canal / River view

**Features - Inside:**

Electric shutters

**Features - Outside:**

Double glazed windows, Large bay windows

**Rooms:**

bedrooms

3 bathrooms

1 ensuite bathrooms

1 living/dining rooms

1 laundry rooms

Length

12.50 m

Width

4.00 m

